

Supplemental images for "[Stasis and Change in Roman Domestic Space: The \*Alae\* of Pompeii's Regio VI](#)," by Elisabetta Cova (*AJA* 119 [2015] 69–102).

\* Unless otherwise noted in the figure caption, images are by the author. Image Gallery figures are not edited by *AJA* to the same level as the published article's figures.

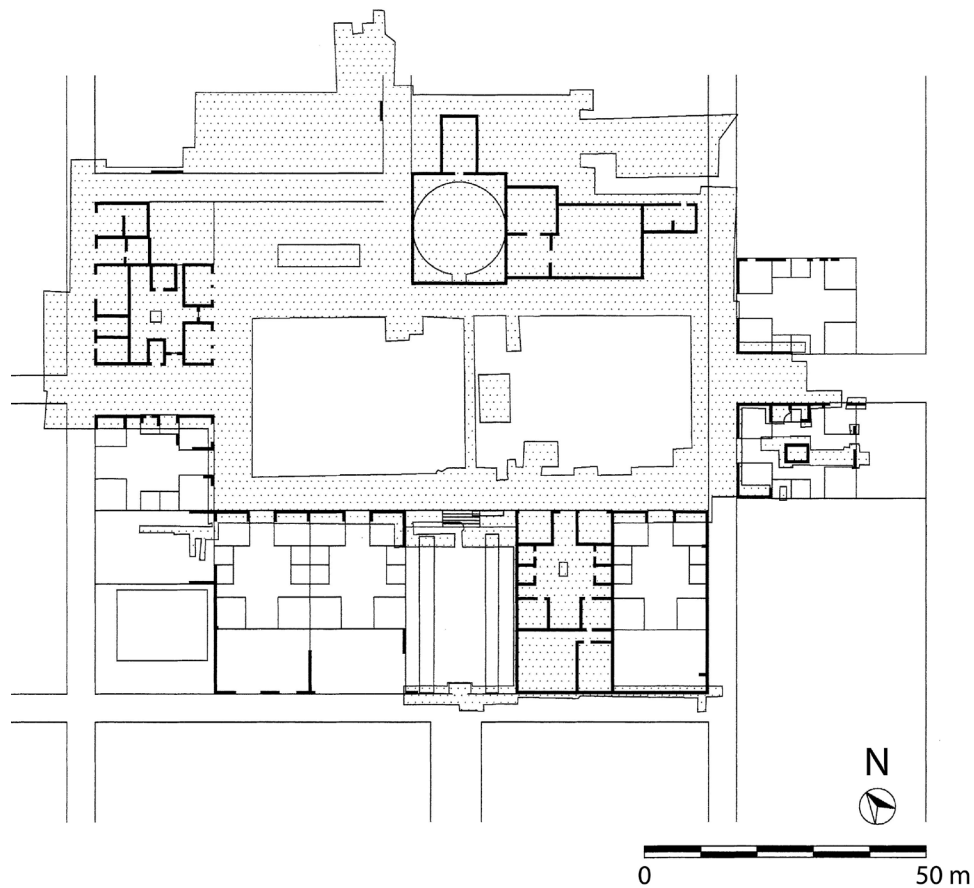


Fig. 1. Plan of the forum and surrounding buildings at Cosa (Fentress 2003, 22, fig. 9).

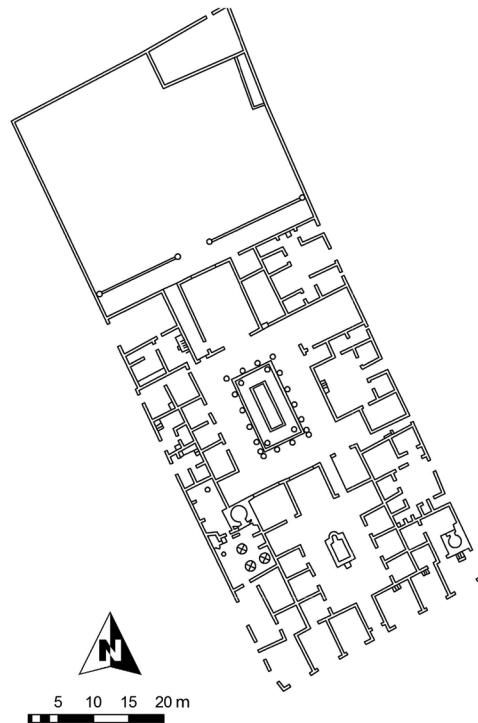


Fig. 2. Plan of Casa di Pansa (VI.6.1), Pompeii (courtesy E. Poehler, Pompeii Bibliography and Mapping Project).



Fig. 3. View of the atrium of Casa di Pansa (VI.6.1), Pompeii.

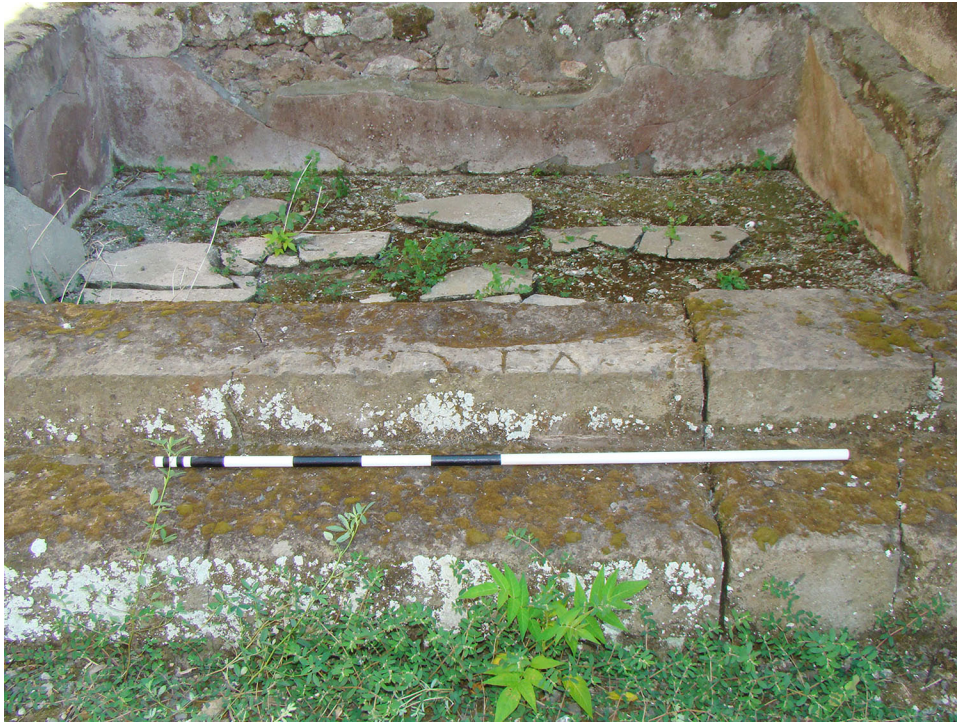


Fig. 4. Accademia di Musica (VI.3.7), Pompeii, detail of masonry base incorporating fragmentary Latin inscription.



Fig. 5. Casa di Adone Ferito (VI.7.18), Pompeii, detail of masonry base and frontal brickwork.



Fig. 6. Casa dei Dioscuri (VI.9.6), Pompeii, *ala* with masonry base.



Fig. 7. Bottega del Profumiere (VI.7.8-12), Pompeii, right *ala*.



Fig. 8. House VI.13.13, Pompeii, right *ala*, detail of back wall with holes for shelves (the top row has been concealed by modern restoration).



Fig. 9. Casa del Labirinto (VI.11.10), Pompeii, view of left *ala* on the Corinthian atrium.



Fig. 10. Casa del Granduca Michele (VI.5.5), Pompeii, opening in east wall of *ala* with jamb reinforcements in *opus latericium*.

### Works Cited

Fentress, E. 2003. *Cosa V: An Intermittent Town, Excavations 1991–1997. MAAR Suppl. 2*. Ann Arbor: University of Michigan Press.