

Supplementary Content: Image Gallery

Images to accompany the *American Journal of Archaeology* publication:

The Functions of Masons' Marks in the Bronze Age Palace at Malia (Crete)

Maud Devolder

Link to this article: <https://doi.org/10.3764/aja.122.3.0343>

Published online 20 June 2018
American Journal of Archaeology Volume 122, Number 3
DOI: 10.3764/ajaonline1223.Devolder.suppl

This online-only published content is freely available electronically immediately upon publication and can be distributed under the Creative Commons Attribution-NonCommercial License (CC BY-NC). This license allows anyone to reuse, remix, and build upon the content, as long as it is for legal noncommercial purposes; the new work must credit the author, the *AJA*, and the Archaeological Institute of America.



Unless otherwise noted in the caption, images are by the author. Images are not edited by the *AJA* to the same level as those in the published article.



FIG. 1. Remains of plaster coating on the sandstone facade on the West Court: *a*, west facade of Rooms III 5 and I 7 during the excavations of the palace at the beginning of the 20th century, looking east (Pelon 1980, pl. 8.1; courtesy École française d'Athènes); *b*, view of plaster coating still preserved in the joints of the sandstone facade south of the West Wing (south wall of Room XX 2, looking northwest).

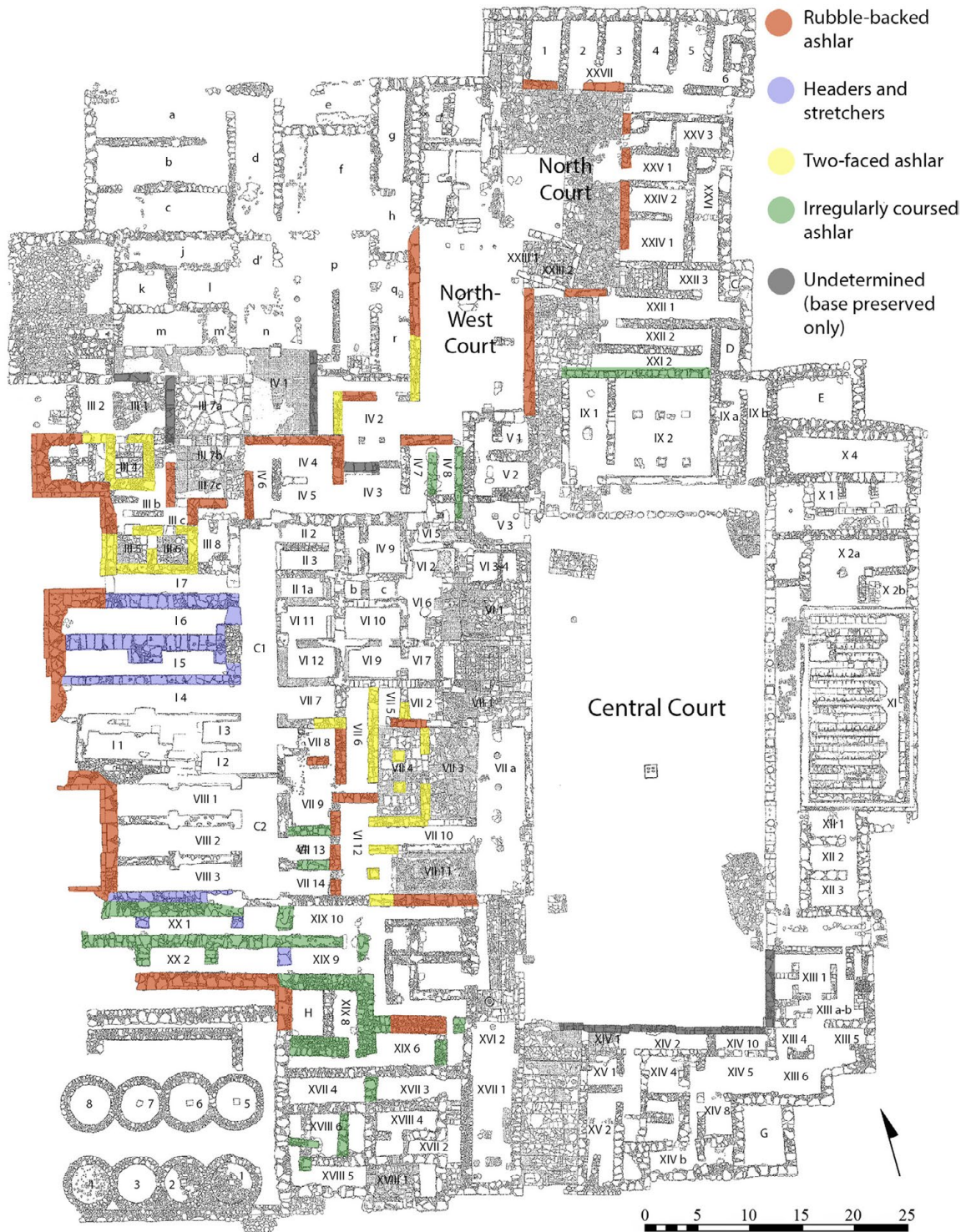


FIG. 2. Plan of the palace at Malia, showing the different types of ashlar sandstone masonry (modified from Pelon 1980, plan 28; courtesy École française d’Athènes).



FIG. 3. South wall of Room XX 2, looking northwest.



FIG. 4. Cut trident marks on *a*, Block 44; *b*, Block 40; *c*, Block 50 . The marks are highlighted in white.



FIG. 5. Partly hidden masons' marks: *a*, on Block 35 in the north wall of Room I 6; *b*, on Block 38 in the south wall of Room I 5. The marks are highlighted in white.



FIG. 6. Elaborate sandstone ashlar masonry in Area VII (west wall of Room VII 6, looking southwest), showing the careful positioning of the blocks.

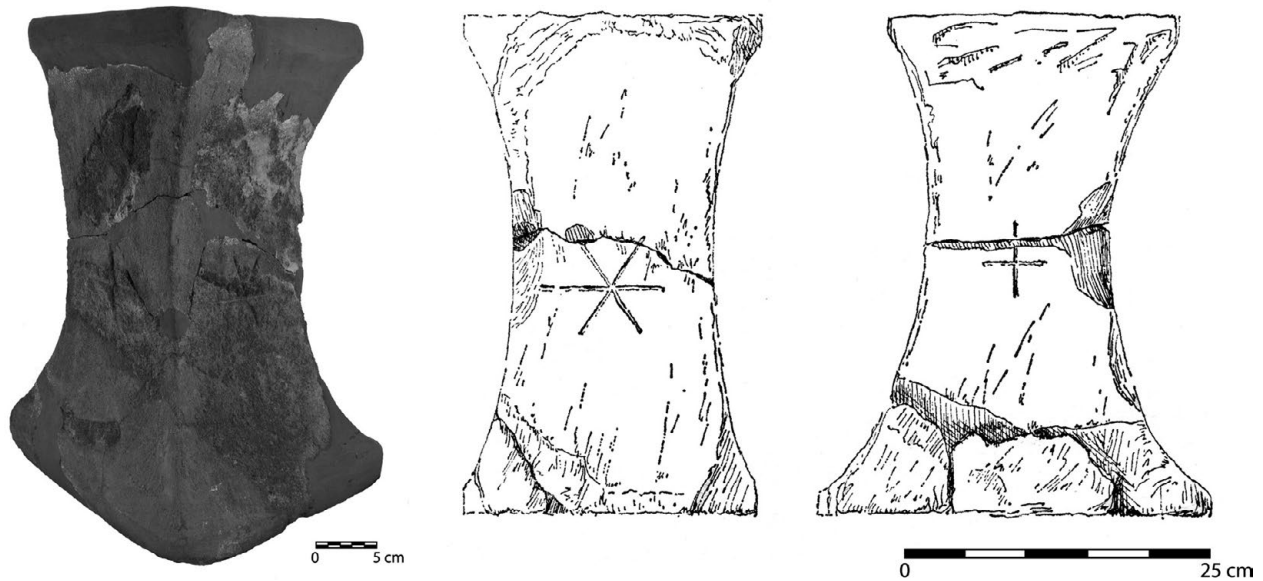


FIG. 7. The sandstone altar of Room XVIII 1 (drawing after Chapouthier et al. 1962, fig. 2; courtesy École française d'Athènes).

Works Cited

- Chapouthier, F., P. Demargne, and A. Dessenne. 1962. *Fouilles exécutées à Mallia IV: Exploration du palais. Bordure méridionale et recherches complémentaires (1929–1935 et 1946–1960)*. *ÉtCrét* 12. Paris: P. Geuthner.
- Pelon, O. 1980. *Le Palais de Malia, V*. *ÉtCrét* 25. Paris: P. Geuthner.