

Supplementary Content: Image Gallery

Images to accompany the *American Journal of Archaeology* publication:

State Formation in Greece: Iklaina and the Unification of Mycenaean Pylos

Michael B. Cosmopoulos

Link to this article: <https://doi.org/10.3764/aja.123.3.0349>

Published online 17 June 2019
American Journal of Archaeology Volume 123, Number 3
DOI: 10.3764/ajaonline1233.Cosmopoulos.suppl

This online-only published content is freely available electronically immediately upon publication and can be distributed under the Creative Commons Attribution-NonCommercial License (CC BY-NC). This license allows anyone to reuse, remix, and build upon the content, as long as it is for legal noncommercial purposes; the new work must credit the author, the *AJA*, and the Archaeological Institute of America.



All images are by the author. Images are not edited by the *AJA* to the same level as those in the published article.



FIG. 1. Aerial view of the Iklaina plateau looking west. The bay of Navarino can be seen in the distance.



FIG. 2. Aerial view of the Iklaina plateau looking east. The modern village of Iklaina can be seen in the distance.



FIG. 3. Aerial view of the Ikaina site from the north.

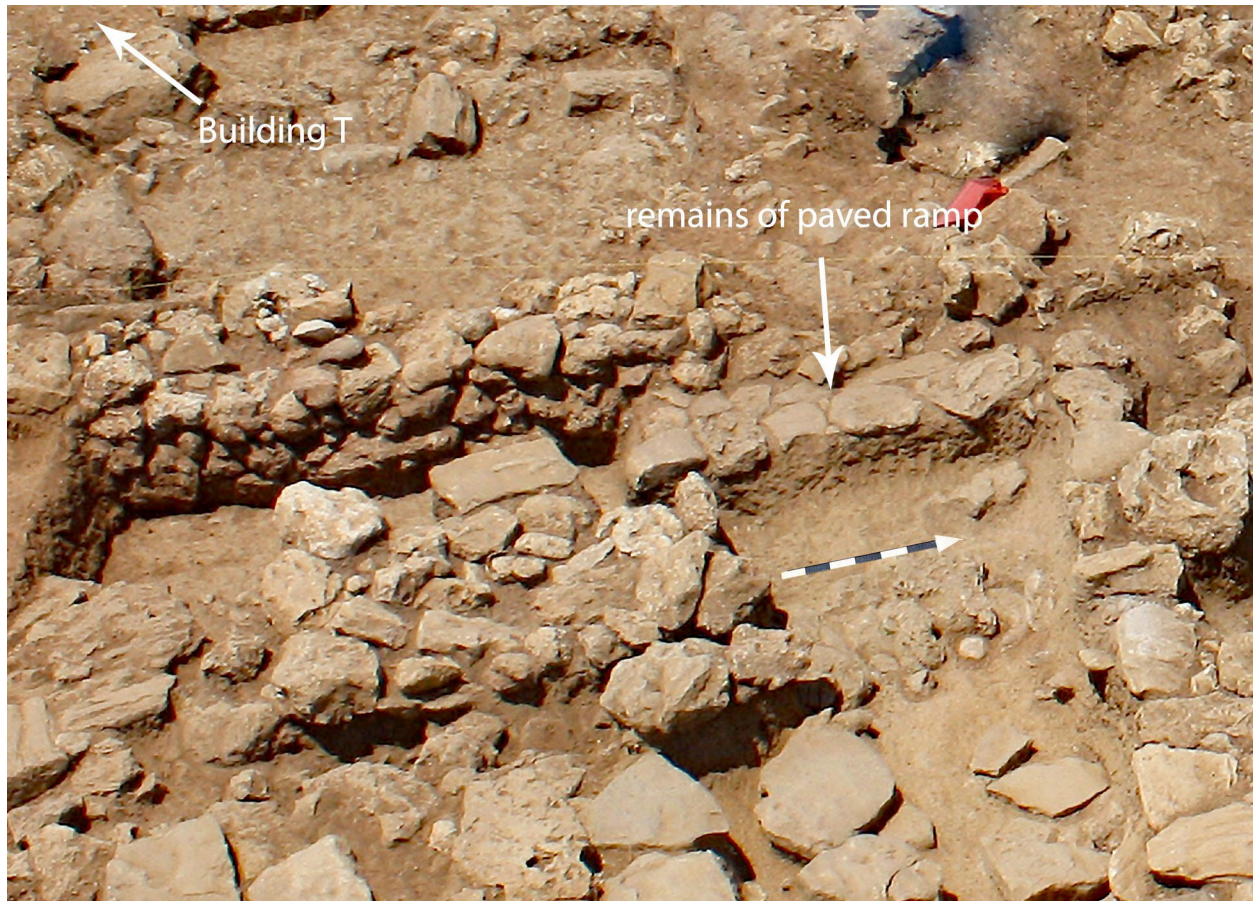


FIG. 4. Preserved slabs of the paved ramp leading to Terrace V (phase 1). View from the east.



FIG. 5. Part of the LH II pavement in front of Terrace V. View from the south.



FIG. 6. The Linear B tablet from Iklaina (IK X 1).



FIG. 7. Aerial view of the Cyclopean Platform from the northwest.



FIG. 8. Aerial view of the Cyclopean Platform from the east. The white arrow points to blocks displaced by bulldozer.

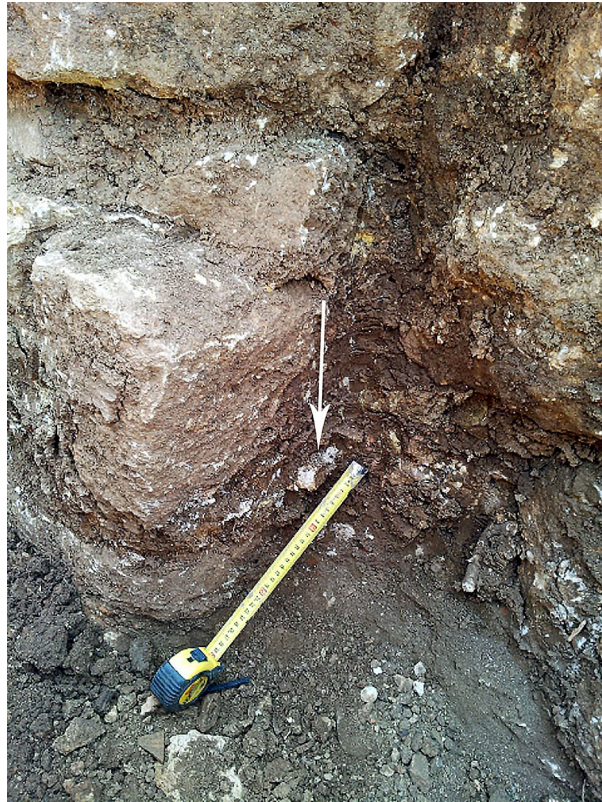


FIG. 9. Piece of painted plaster still attached on the north wall of the Cyclopean Platform.



FIG. 10. Computer reconstruction of the Cyclopean Terrace Building (CTB). View from the northwest (reconstruction by D. Tsalkanis).



FIG. 11. Flagstones at the east end of the Cyclopean Platform marking the level of the floor of the Cyclopean Terrace Building (CTB).



FIG. 12. View of the *horos* stone in relation to the east wall of Building X. View from the south.



FIG. 13. Phase 4 plaster floor with clay channel west of Unit E. View from the west.



FIG. 14. Another phase 4 plaster floor west of Unit E. View from the west.