

Supplementary Content: Image Gallery

Images to accompany the *American Journal of Archaeology* publication:

Hacimusalar Höyük in the Early Bronze Age

İlknur Özgen, Elizabeth P. Baughan, and Elif Ünlü

Link to this article: <https://doi.org/10.3764/aja.125.4.0603>

Published online 13 September 2021
American Journal of Archaeology Volume 125 Number 4
DOI: 10.3764/ajaonline1254.Baughan.suppl

This online-only published content is freely available electronically immediately upon publication and can be distributed under the Creative Commons Attribution-NonCommercial License (CC BY-NC). This license allows anyone to reuse, remix, and build upon the content, as long as it is for legal noncommercial purposes; the new work must credit the author, the *AJA*, and the Archaeological Institute of America.



All images are © Hacimusalar Höyük Excavation Archive, and all objects are held by the excavation collection except as noted. Pottery and finds drawings are by A.H. Özkan and B.C. Cockson. Images are not edited by the AJA to the same level as those in the printed article.

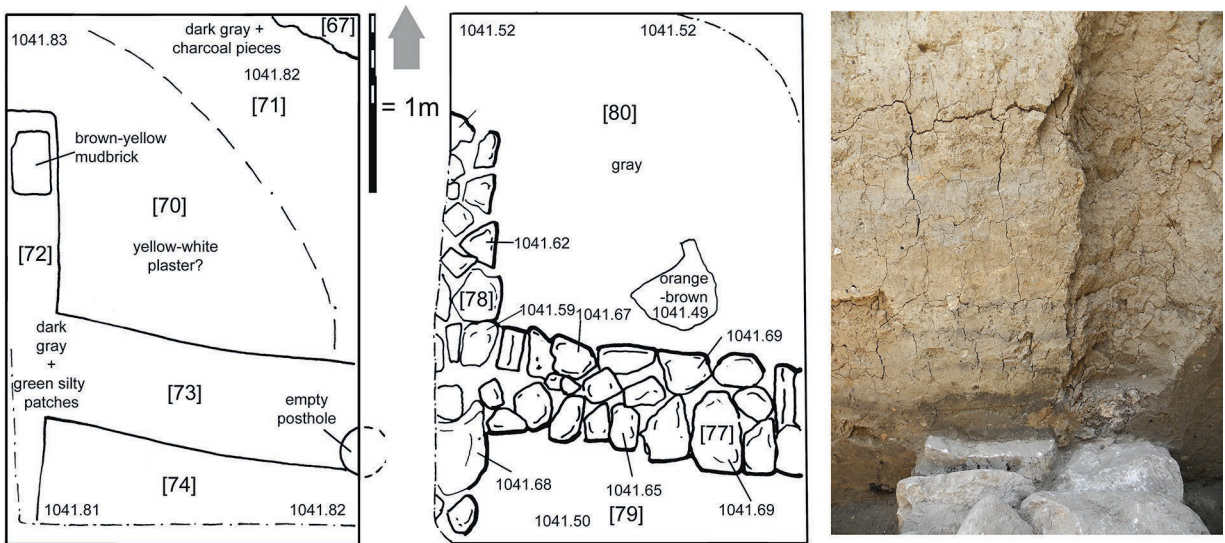


FIG. 1. Drawings of walls exposed in “B4g9” sondage, with view of large posthole and coursed mudbrick in eastern balk.



FIG. 2. Impressions in burnt mud walling or roofing chunks: *a*, from NSS-2 (from HM20724, HM21454, HM22565, HM21466); *b*, from NSS-1, with oak leaf impression (HM23166); *c*, from NSS-7 (HM26368 and HM26352).

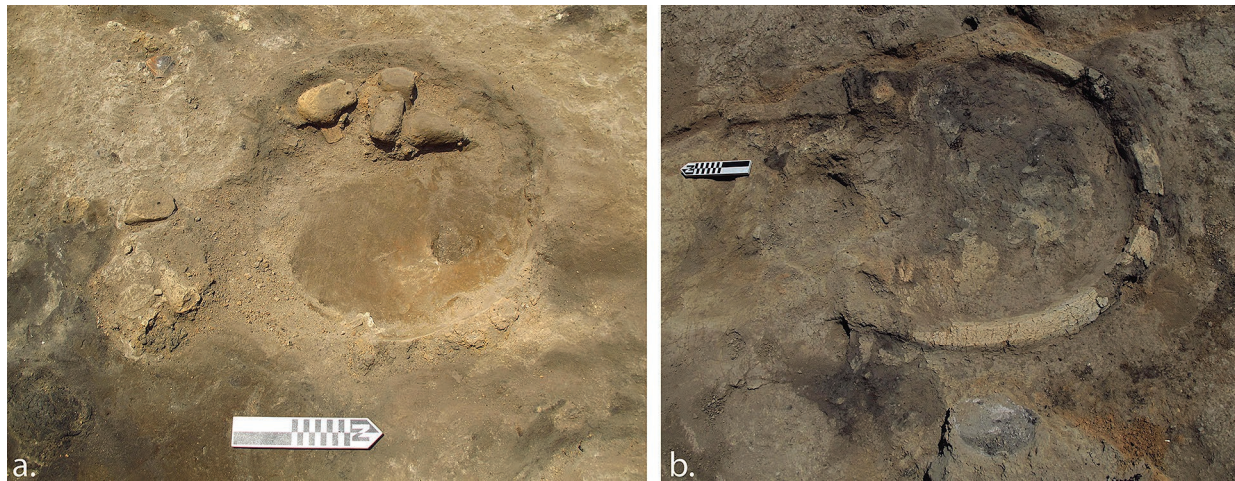


FIG. 3. Details of floor features in Terraced Building Phase 1: *a*, NSS-3 floor bin (hearth?) with loomweights; *b*, curbed hearth in NSS-5.



FIG. 4. Fragments of a globular cup from NSS-5, collected and photographed separately, from two pottery lots: HM24773 and HM24701.

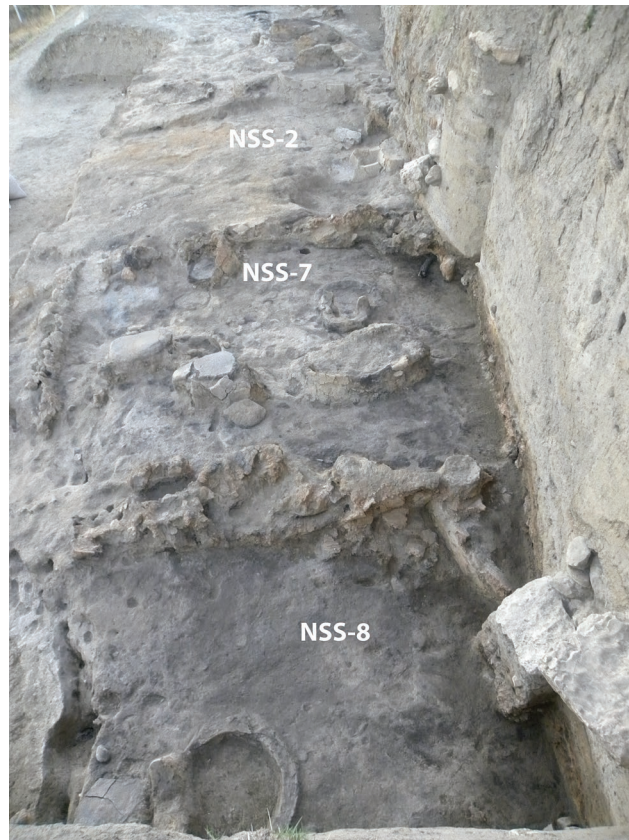


FIG. 5. View of Terraced Building Phase 2, looking east.



FIG. 6. View of NSS-8 hearth (Locus 66) during excavation.

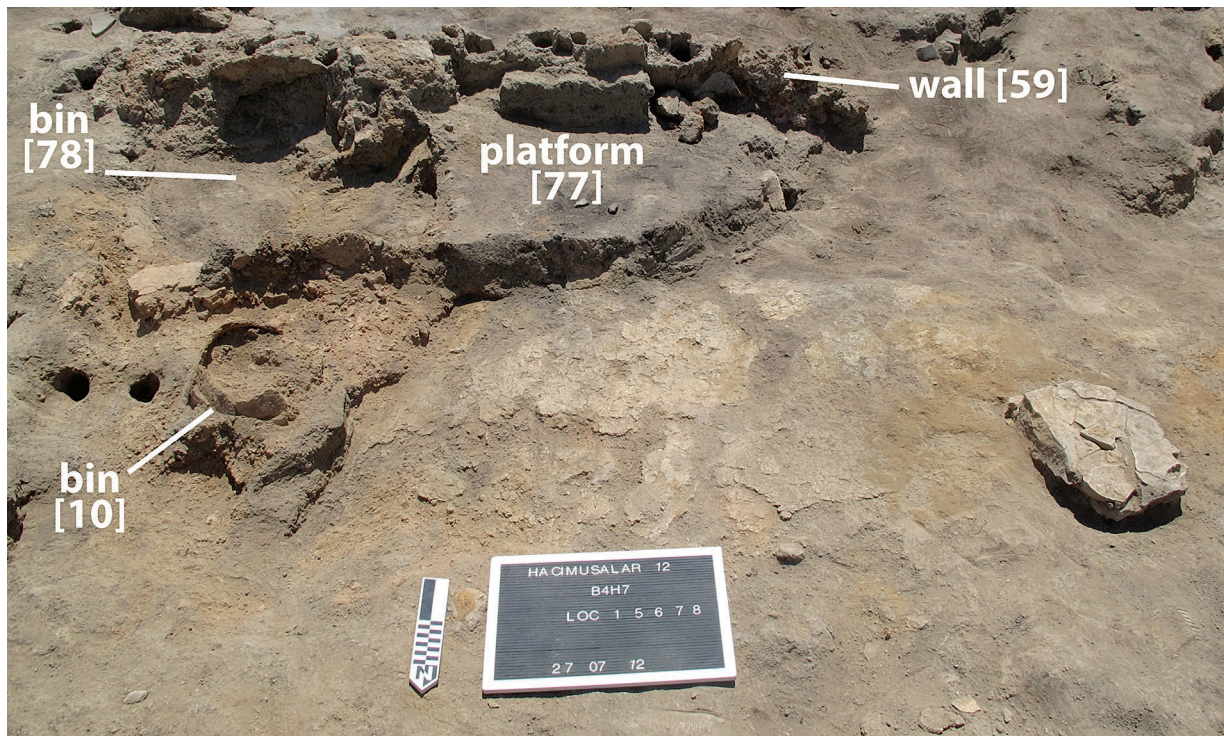


FIG. 7. View of southeast corner of NSS-9 with rounded platform and clay bins.

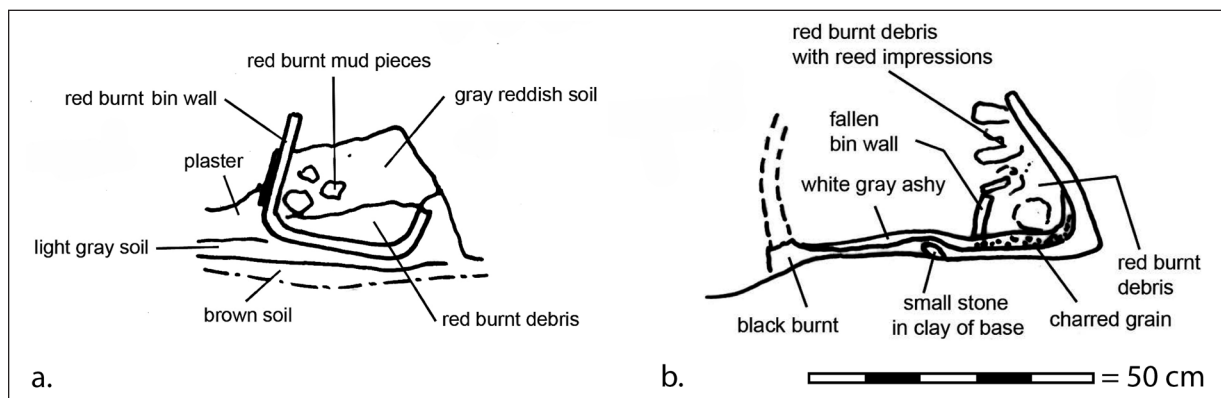


FIG. 8. Section drawings of two clay bins from Terraced Building Phase 2: *a*, east-west section through “B4h7” Locus 10, NSS-9; *b*, north-south section through “B4i7” Locus 57, NSS-7 (drawings by B.C. Cockson).

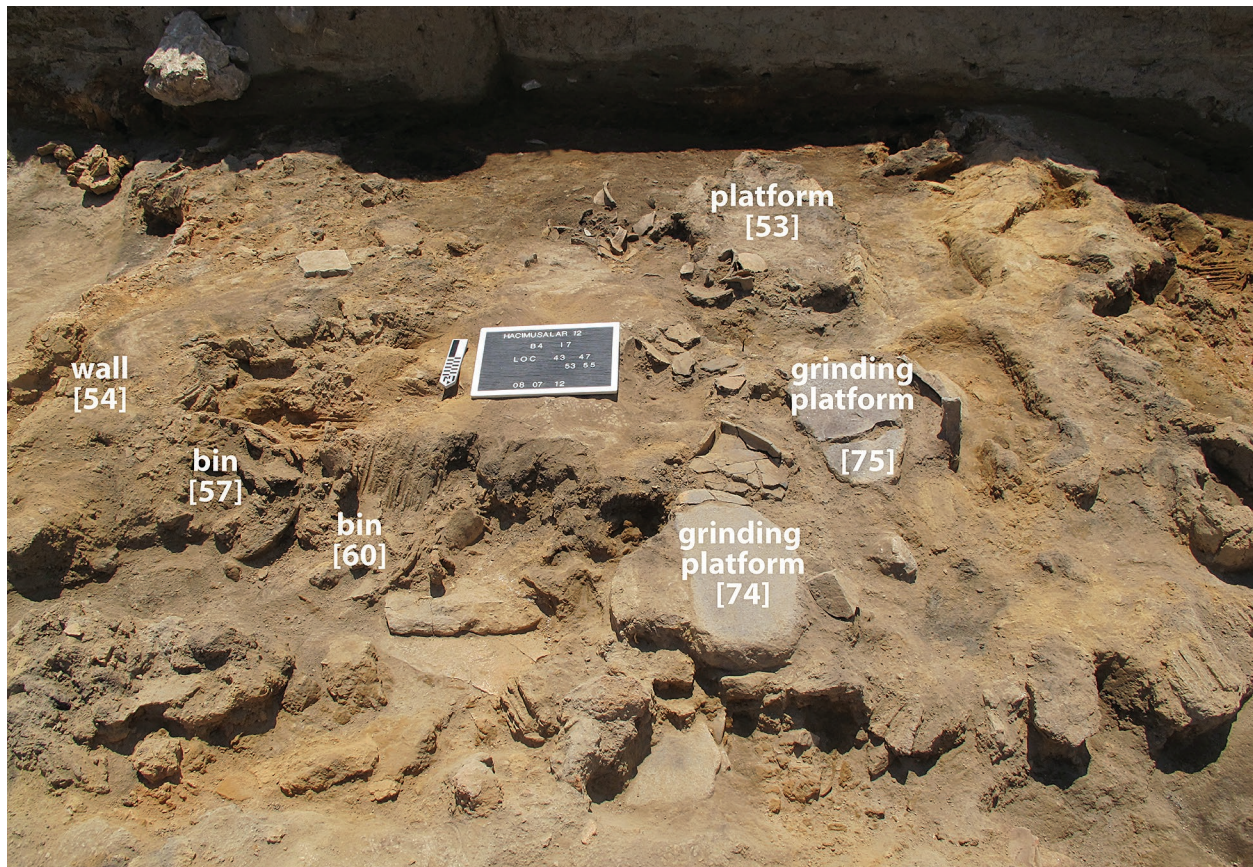


FIG. 9. View of NSS-7 during excavation, showing collapsed walling and broken pottery covering floor and installations.



FIG. 10. Views of NSS-7 hearth (Locus 70) during excavation, showing associated pottery: *a*, base of large red-burnished, white-painted jar (from HM25661/26017/26365) sitting on raised horseshoe-shaped portion, with upright slabs becoming visible; *b*, excavation of beak-spouted jugs (see fig. 17, w–y) between upright slabs; *c*, with fragments of red-burnished, white-painted jug (from HM26606/26607) in rimmed basin; *d*, fully exposed, with small red-burnished jug (HM26683) and red-burnished, white-painted bowl (HM26642) on floor.

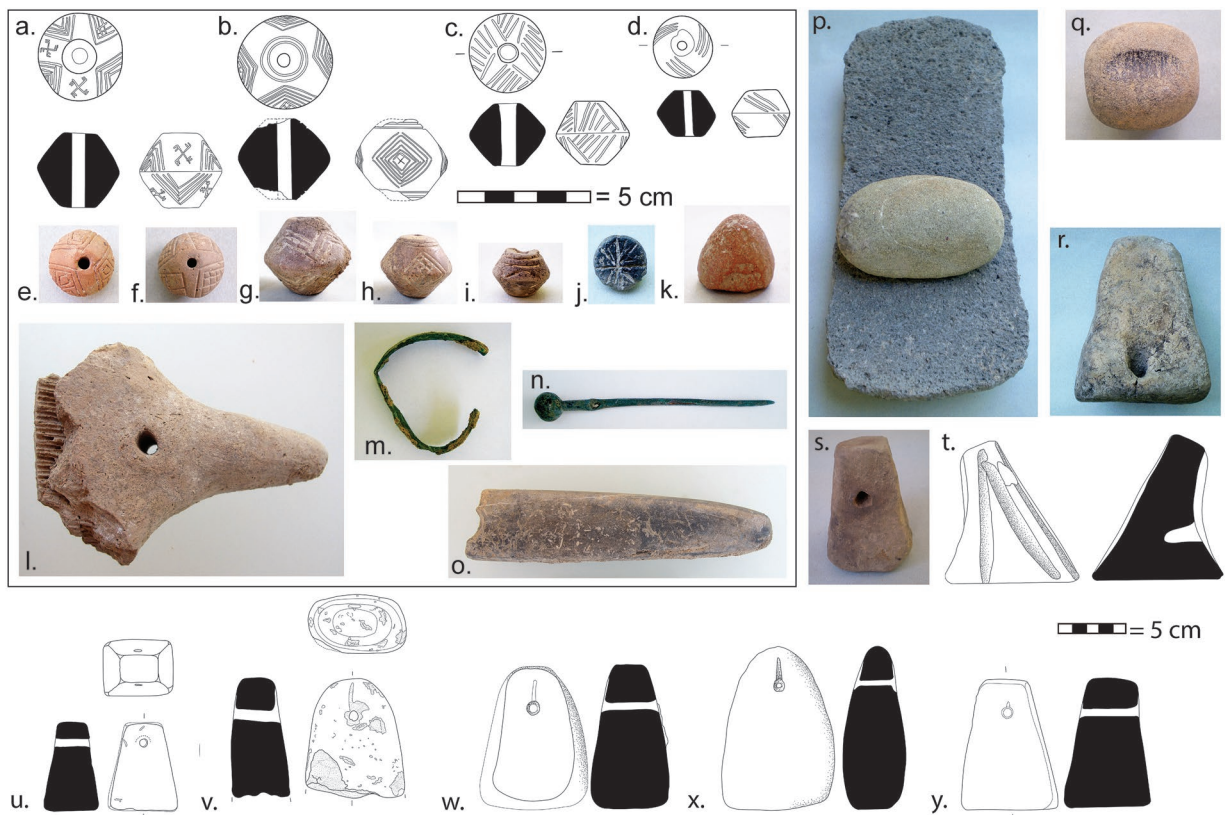


FIG. 11. Selected small finds from general Terraced Building Phase 2 debris. Clay objects: spindlewhorls (a, HM25680; b, HM26628; c, HM25603; d, HM23442; e, HM15741; f, HM15863; g, HM16729; h, HM16732; i, HM15743); stamp seal (j, HM15433); solid, conical object (k, HM16447); brush handle (l, HM27123); spit supports (r, HM15718; s, HM15893; t, HM24884); and loomweights (u, HM15419; v, HM15421; w, HM25681; x, HM25682; y, HM25689). Copper-based objects: band (m, HM22086) and toggle pin (n, HM16597). Stone objects: (o, whetstone pendant?, HM25692; p, grinding stone and pounder, HM16570, HM16578; q, polisher, HM16569) (a–j now in the Elmalı Museum; n, u now in the Antalya Museum).



FIG. 12. Selected pottery from general Terraced Building Phase 2 debris: red-burnished jars or cups (a, HM15426; b, HM15744; c, HM15708; d, HM16586; e, HM15408.5; h, HM15408.2; i, HM15714.1; j, HM15406.8); jars (f, HM15960.1; g, HM15737.2, with relief medallion; m, HM16921, with white-filled incisions; n, HM16587, plain-burnished); coarse ware (k, straight-walled cup, HM16585; l, shallow bowl with saddle lug, HM16567; o, baking tray, HM16902); burnished bowls (p, from HM23161 and HM23194; q, from HM23161, buff-burnished; r, HM15445.1, dark-burnished); beak-spouted jugs (s, HM15733; t, HM15734; u, HM16701; v, HM15425; w, HM23853; x, HM16593) (a, d, k, n, s–v, x now in the Antalya Museum; b, c, l, o, w now in the Elmalı Museum).



FIG. 13. Selected finds from NSS-6 and associated levels: clay whorls (a, HM17380; b, HM17451; c, HM17393; d, HM25155); bone awl (e, HM24060) and cylinder (f, HM23790); idol figurine (g, HM24077); copper-alloy (toggle?) pin (h, HM22018); miniature jars (i, HM17398; j, HM17376; k, HM17487, Pot VI in fig. 19); jugs (l, HM17290, Pot III in fig. 13; m, HM24058; n, from HM22502); tripod jars (o, HM17359.1; p, HM17480.1, Pot II in fig. 19); coarse jar (q, HM17498); pedestaled lid (r, HM17179.1); bowls and bowl fragments (s, HM17359.3, red-burnished; t, HM17359.4, dark-burnished; u, HM17394.1, red-burnished; v, HM17299, dark-burnished; w, HM17497, dark-burnished; x, HM17373.1; y, HM17376, dark-burnished; z, HM17359.2; aa, HM17580, buff-burnished; bb, HM17189, red-burnished) (a-c, j-l, o, p, s-x, z-bb now in the Antalya Museum; d, g now in the Elmalı Museum).

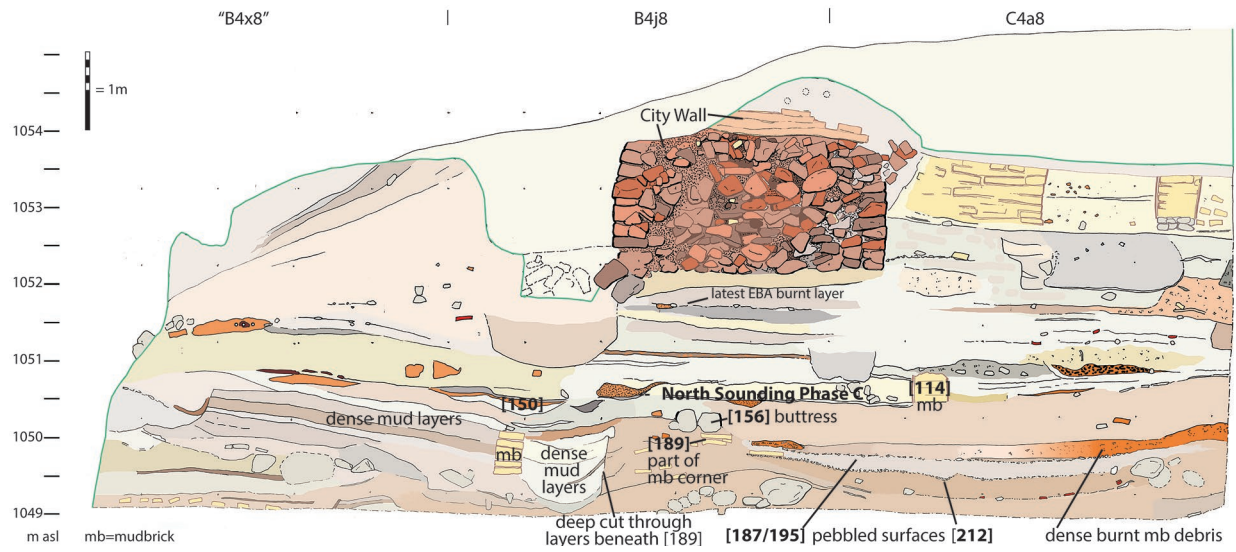


FIG. 14. East section in North Sounding (drawing by B.C. Cockson).



FIG. 15. Two successive views, left to right, of building in North Sounding Phase C during excavation.



FIG. 16. Loomweights with incised patterns: *a*, HM22810, from cobbled layer between Terraced Building Phases 1 and 2; *b*, HM27135, from surface cleaning on the south rim (now in the Elmalı Museum).

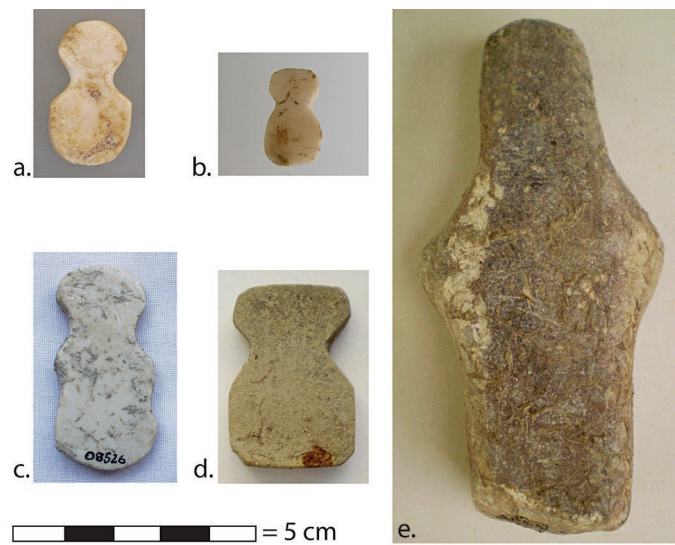


FIG. 17. EBA stone idols from later contexts: *a*, marble or limestone, HM24986, from surface; *b*, marble or alabaster, HM17236, from “B4i10”; *c*, marble, HM8526, from D6f8; *d*, limestone, HM17800, from “B4i8–i9”; *e*, limestone, HM20407, from D5j6 (*b* now in the Antalya Museum; *e* now in the Elmalı Museum).